

*Diaphragm Operated*

**MIEPL** make Compact design differential pressure gauges are made by piston displacement construction. This is highly recommended to use in OEM application and for small dial sizes.

**FEATURES**

- Diaphragm operated
- Compact design
- Isolated pressure chambers
- Static pressure up to 60 bar

**APPLICATION**

- Filtration plants
- Water applications
- Natural gas processing plant
- Pumps & Compressors
- Clean room applications

**REFERENCE**

- EN 837-3

**STANDARD SPECIFICATIONS**

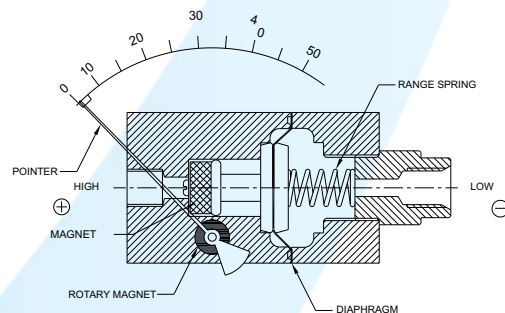
Dial size	: DN63 / DN100 / DN150
Range	: 0...75 mbar up to 0...4 bar
Mounting pattern	: In-line connection
Process connection	: 1/4" NPT (F) X 2 Nos.
Ingress protection	: IP 54
Execution	: Dry

**STANDARD PARAMETERS**

Accuracy	: $\pm 2\%$ (Ascending)
Ambient Temperature	: -40...+65°C
Service Temperature	: 80°C max.
Pressure limits	: Steady pressure up to FS value, No over-pressure

**MATERIAL OF CONSTRUCTION**

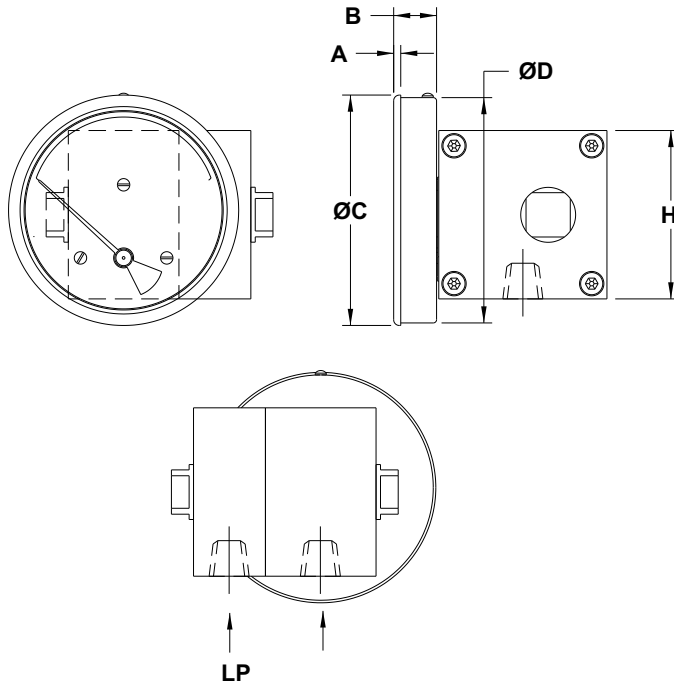
Sensing Element	: Diaphragm
Case	: AISI 304 SS, Push-fit window
Body	: AISI 316 SS
Dial	: Aluminum, black graduation on white background
Pointer	: Fix, aluminum, black powder coated
Window	: Sheet glass

**WORKING PRINCIPLE****Note:**

1. First marking on the scale shall be 20% of FSD.

## DRAWING

DIMENSIONAL DRAWING



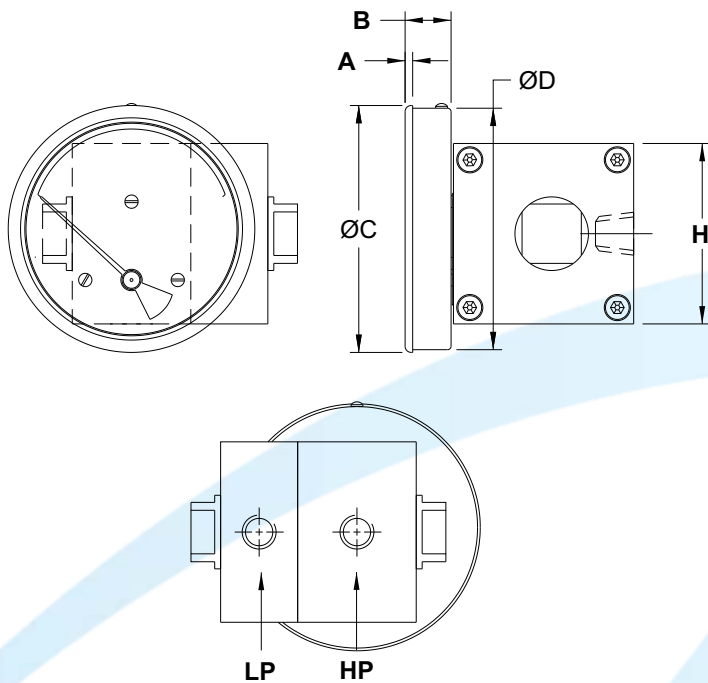
Type - 1A (LOW RANGE)

DN	63	100	150
A	2.4	3.2	3.2
B	18.6	19.5	19.5
ØC	66.5	104	155.5
ØD	63	102	151.5
E	A/F 20	A/F 20	A/F 20
H	76	76	76
Weight (gm)	710	760	860

Type - 1A (HIGH RANGE)

DN	63	100	150
A	2.4	3.2	3.2
B	18.6	19.5	19.5
ØC	66.5	104	155.5
ØD	63	102	151.5
E	A/F 20	A/F 20	A/F 20
H	50	50	50
Weight (gm)	710	760	860

DIMENSIONAL DRAWING



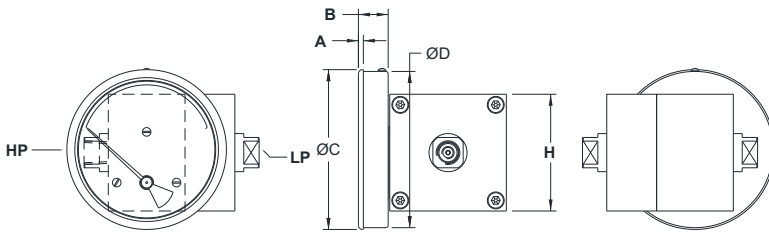
Type - 2A (LOW RANGE)

DN	63	100	150
A	2.4	3.2	3.2
B	18.6	19.5	19.5
ØC	66.5	104	155.5
ØD	63	102	151.5
E	A/F 20	A/F 20	A/F 20
H	76	76	76
Weight (gm)	710	760	860

Type - 2A (HIGH RANGE)

DN	63	100	150
A	2.4	3.2	3.2
B	18.6	19.5	19.5
ØC	66.5	104	155.5
ØD	63	102	151.5
E	A/F 20	A/F 20	A/F 20
H	50	50	50
Weight (gm)	710	760	860

DIMENSIONAL DRAWING



Type - 3A			
DN	63	100	150
A	2.4	3.2	3.2
B	18.6	19.5	19.5
ØC	66.5	104	155.5
ØD	63	102	151.5
E	A/F 20	A/F 20	A/F 20
H	76	76	76
Weight (gm)	700	750	850

## ORDERING CODE

MP14 - C - XXX - 3A - 2NF - IP1 - E1

1. DIAL SIZE	63 mm	C					
	100 mm	D					
	150 mm	F					
2. RANGE	Refer "Range Table"		XXX				
3. MOUNTING PATTERN	Direct Bottom connection			1A			
	2" Pipe/Yoke mounting			1C			
	Direct Back connection			2A			
	In-line connection			3A			
4. PROCESS CONNECTION	¼" BSP (F) X 2 Nos.				2BF		
	¼" NPT (F) X 2 Nos.				2NF		
	Other thread size and standards available on request. <sup>1</sup>						
5. INGRESS PROCESS	IP 54					IP1	
6. EXECUTION	Dry						E1
7. OTHER OPTIONS	Calibration certificate	SB	SS tag plate, AISI 304 SS	WF	Dial tag marking		WT
	SS tag plate, AISI 316 SS	WG	Custom designed dial	WR	With 3-Hole front panel		A7

Ordering Example : **MP14 - C - XXX - 1A - 2NF - IP1 - E1**

1. For other connections, please contact factory.